

Opus.

(floorplans)

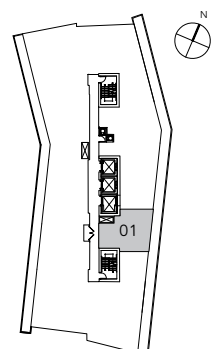
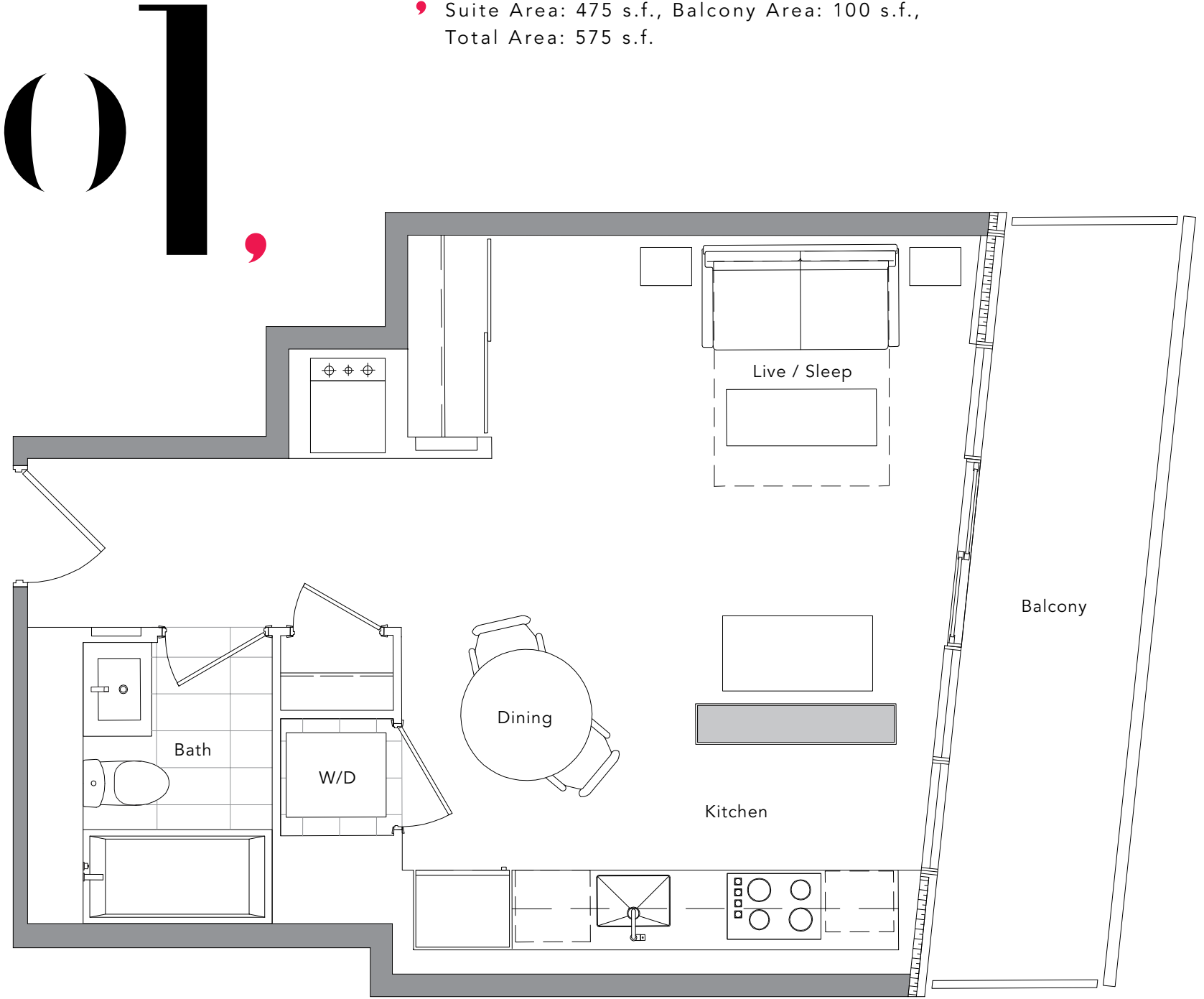


(phase TWO)

(phase ONE)

(STUDIO)

• Suite Area: 475 s.f., Balcony Area: 100 s.f.,
Total Area: 575 s.f.

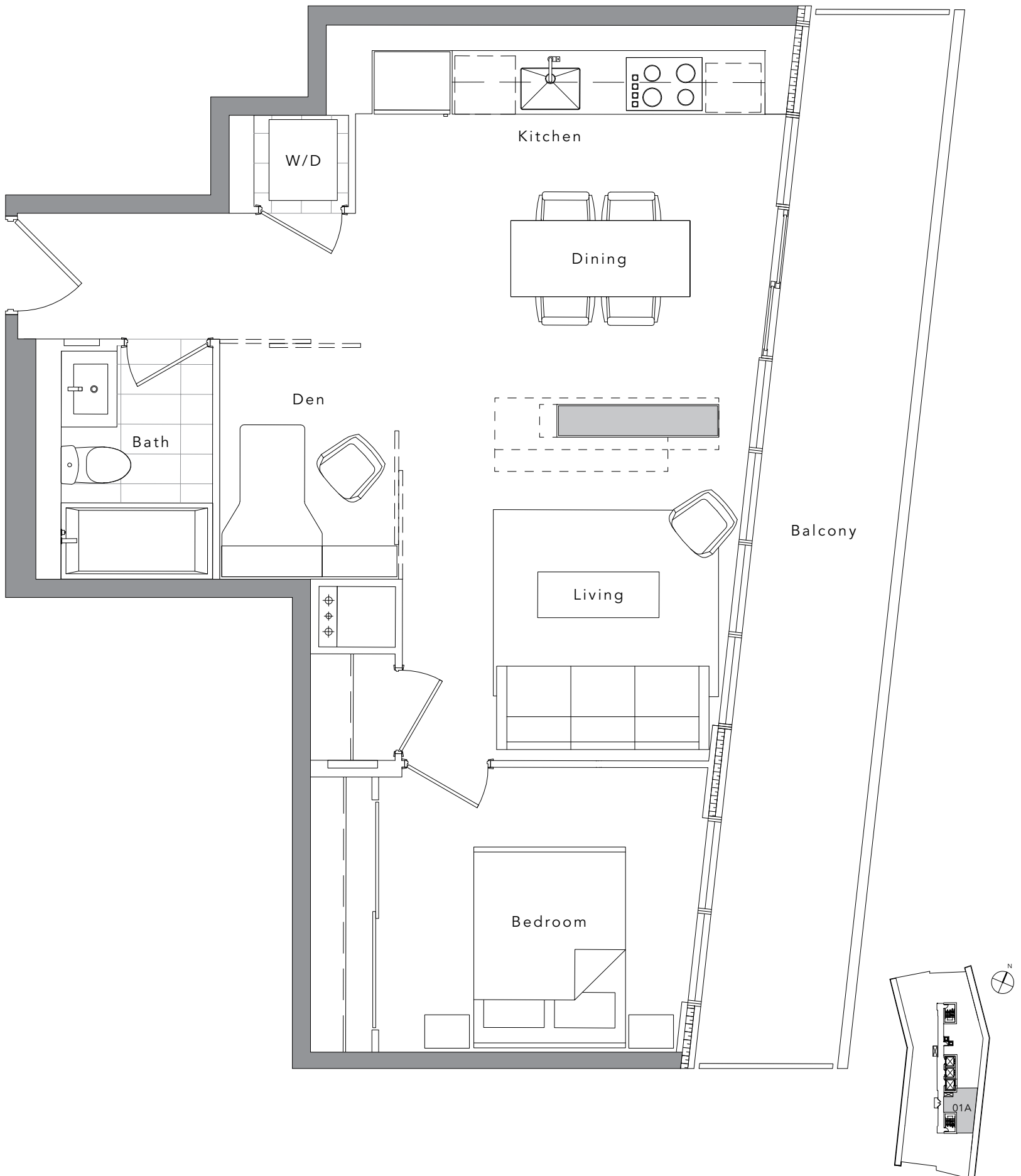


The developer reserves the right to make minor revisions to interior wall locations and exterior window system. All materials and drawings are approximate. Information is subject to change without notice. Actual square footage may vary from the stated floor plan. Furniture and upgrades shown on plans are for illustration purposes only and are not included. E. & O. E.

• Suite Area: 686 s.f., Balcony Area: 176 s.f.,
Total Area: 862 s.f.

(1 BEDROOM + DEN)

Ola,

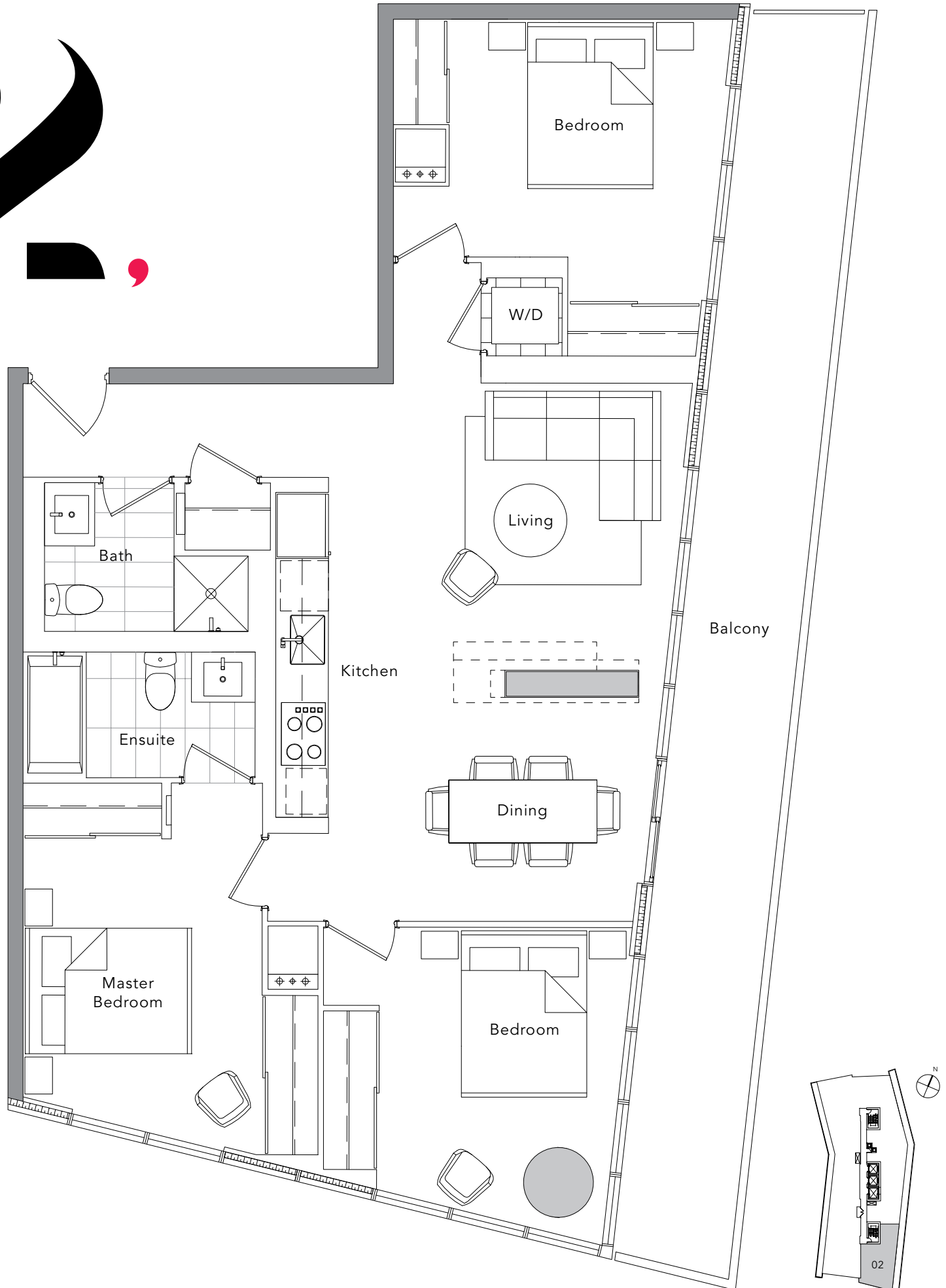


The developer reserves the right to make minor revisions to interior wall locations and exterior window system. All materials and drawings are approximate. Information is subject to change without notice. Actual square footage may vary from the stated floor plan. Furniture and upgrades shown on plans are for illustration purposes only and are not included. E. & O. E.

2/F - 9/F

(3 BEDROOM)

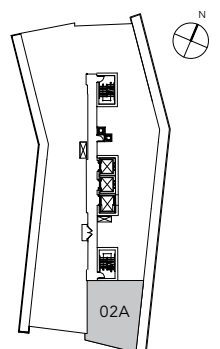
• Suite Area: 1068 s.f., Balcony Area: 255 s.f.,
Total Area: 1323 s.f.



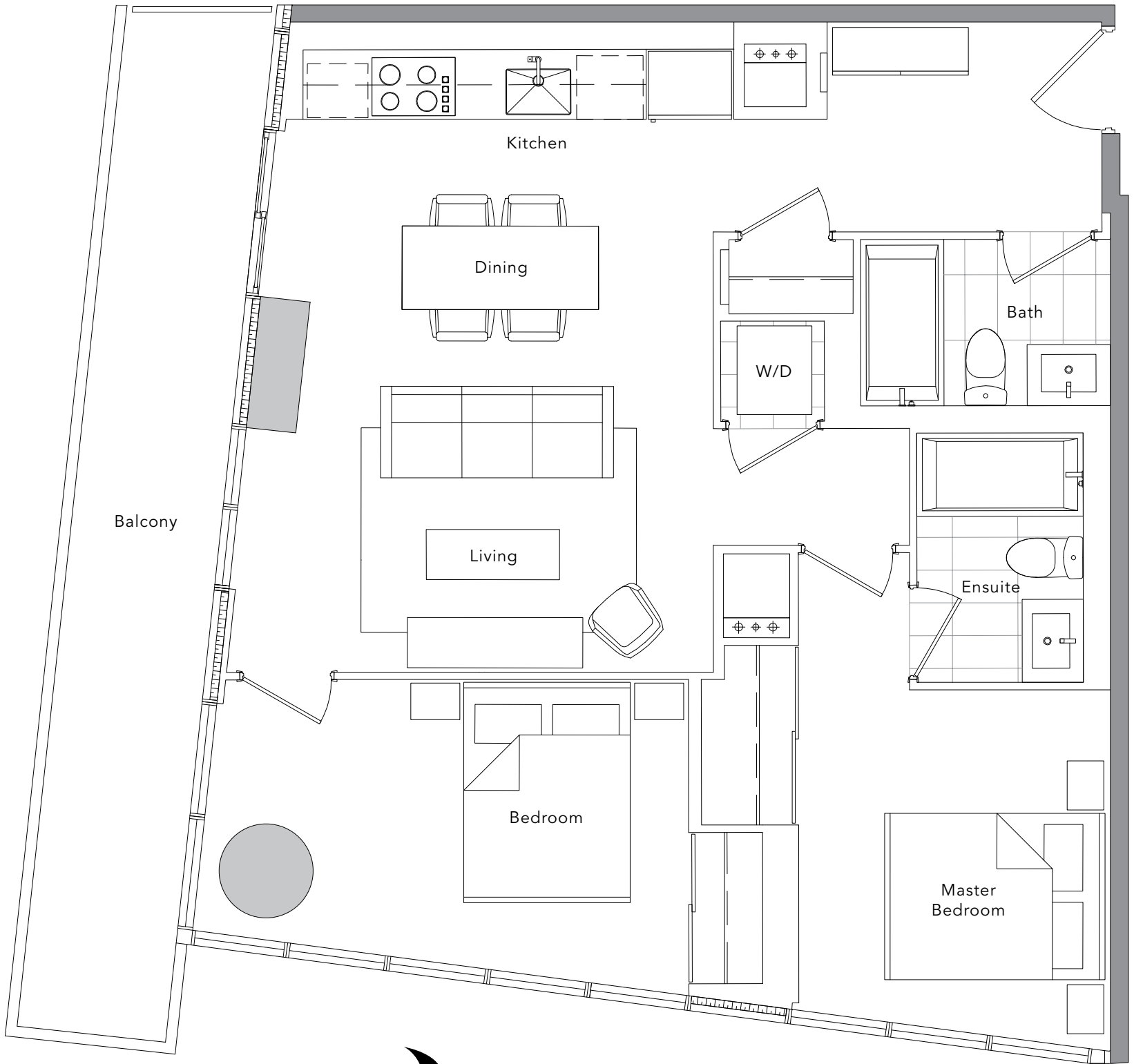
The developer reserves the right to make minor revisions to interior wall locations and exterior window system. All materials and drawings are approximate. Information is subject to change without notice. Actual square footage may vary from the stated floor plan. Furniture and upgrades shown on plans are for illustration purposes only and are not included. E. & O. E.

(2 BEDROOM + DEN)

• Suite Area: 862 s.f., Balcony Area: 181 s.f.,
Total Area: 1043 s.f.



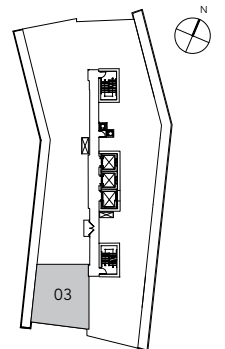
The developer reserves the right to make minor revisions to interior wall locations and exterior window system. All materials and drawings are approximate. Information is subject to change without notice. Actual square footage may vary from the stated floor plan. Furniture and upgrades shown on plans are for illustration purposes only and are not included. E. & O. E.



03

• Suite Area: 818 s.f., Balcony Area: 152 s.f.,
Total Area: 970 s.f.

(2 BEDROOM)

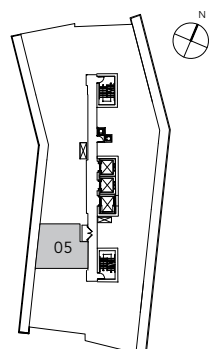
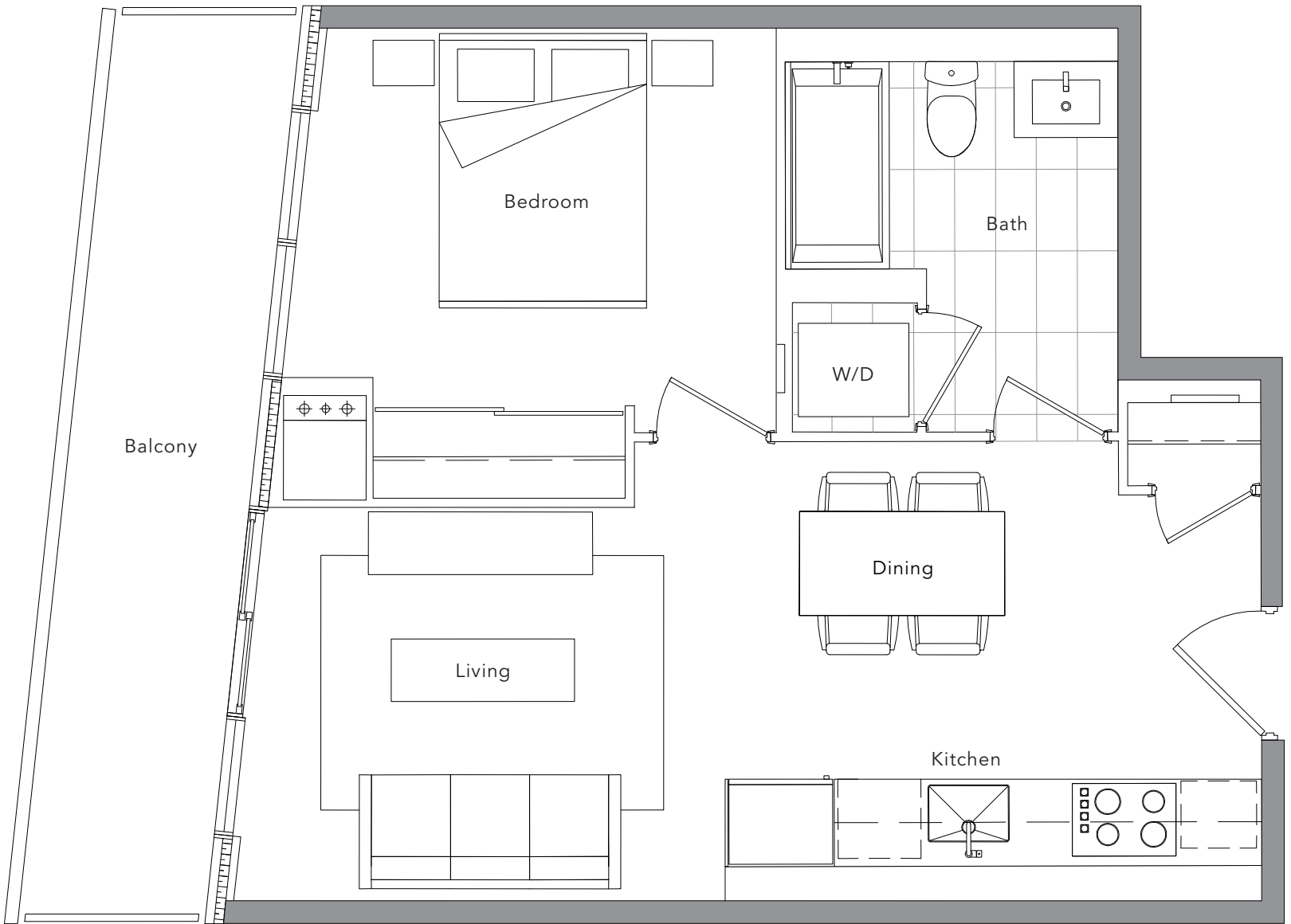


The developer reserves the right to make minor revisions to interior wall locations and exterior window system. All materials and drawings are approximate. Information is subject to change without notice. Actual square footage may vary from the stated floor plan. Furniture and upgrades shown on plans are for illustration purposes only and are not included. E. & O. E.

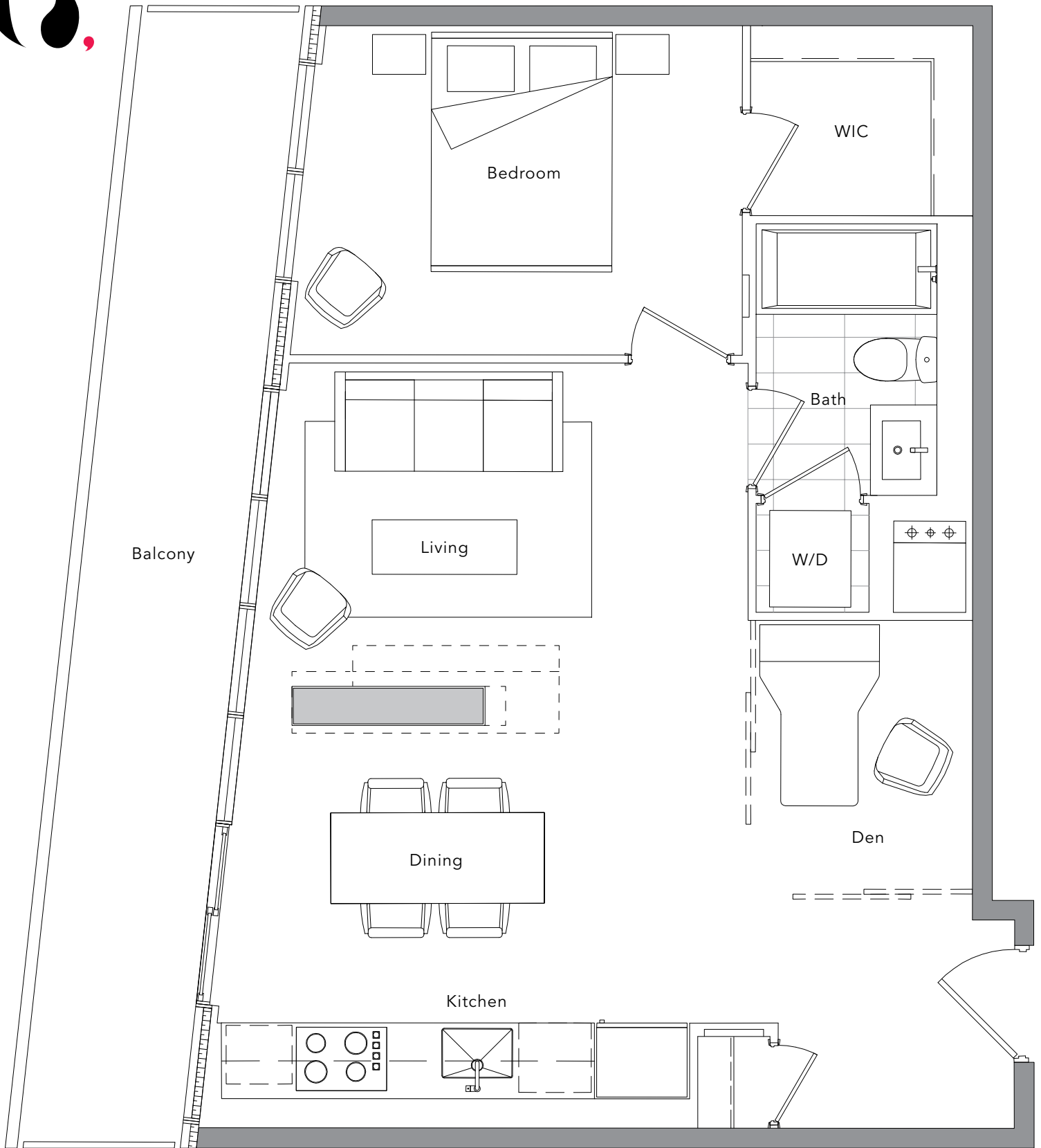
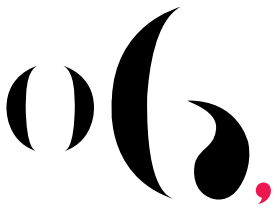
(1 BEDROOM)



• Suite Area: 525 s.f., Balcony Area: 106 s.f., Total Area: 631 s.f.

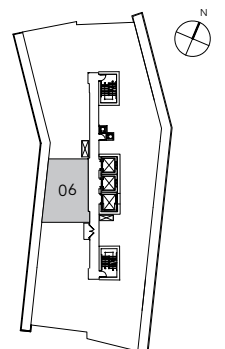


The developer reserves the right to make minor revisions to interior wall locations and exterior window system. All materials and drawings are approximate. Information is subject to change without notice. Actual square footage may vary from the stated floor plan. Furniture and upgrades shown on plans are for illustration purposes only and are not included. E. & O. E.



(1 BEDROOM + DEN)

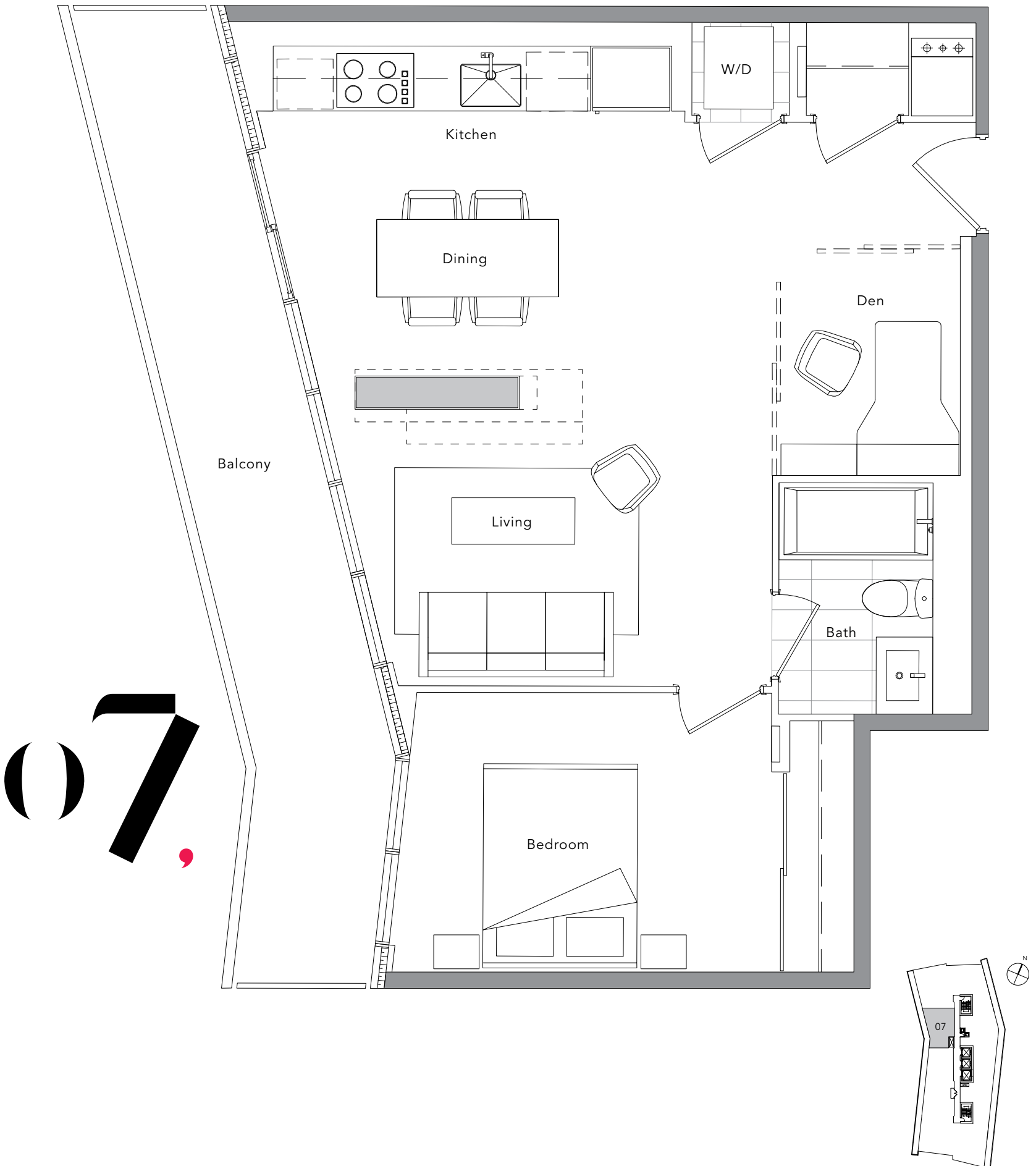
• Suite Area: 678 s.f., Balcony Area: 152 s.f.,
Total Area: 830 s.f.



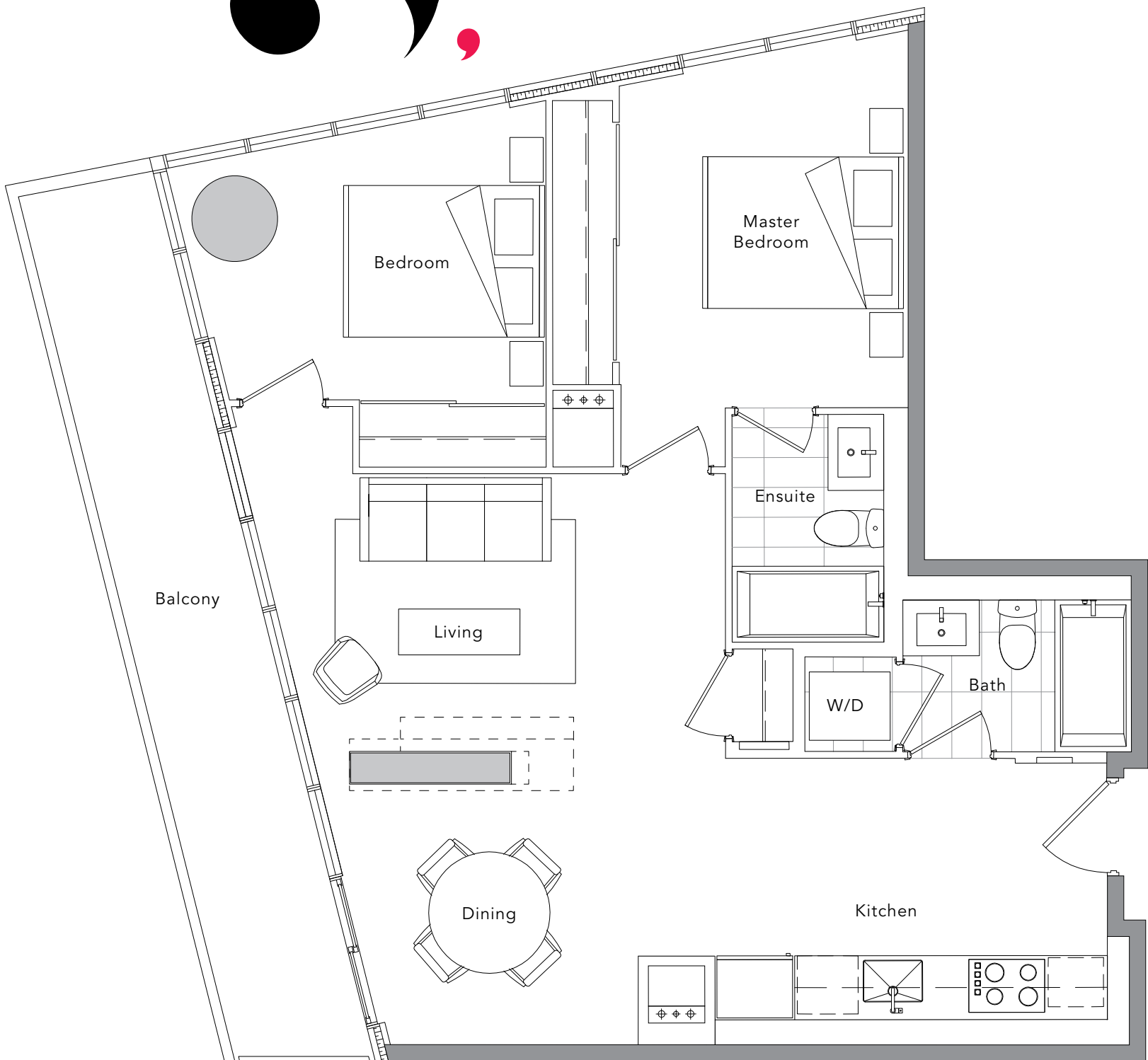
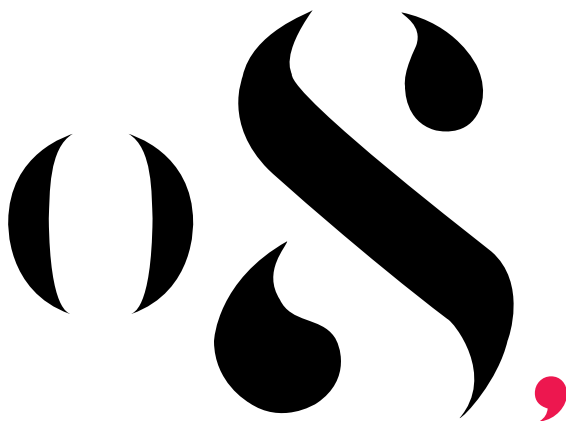
The developer reserves the right to make minor revisions to interior wall locations and exterior window system. All materials and drawings are approximate. Information is subject to change without notice. Actual square footage may vary from the stated floor plan. Furniture and upgrades shown on plans are for illustration purposes only and are not included. E. & O. E.

• Suite Area: 662 s.f., Balcony Area: 157 s.f.,
Total Area: 819 s.f.

(1 BEDROOM + DEN)

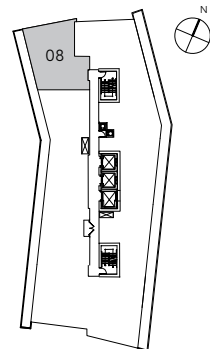


The developer reserves the right to make minor revisions to interior wall locations and exterior window system. All materials and drawings are approximate. Information is subject to change without notice. Actual square footage may vary from the stated floor plan. Furniture and upgrades shown on plans are for illustration purposes only and are not included. E. & O. E.



(2 BEDROOM)

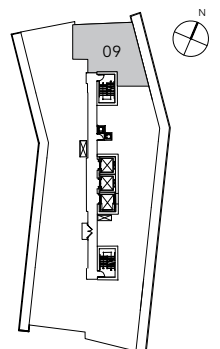
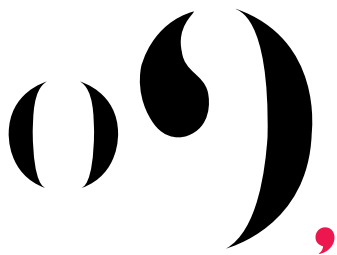
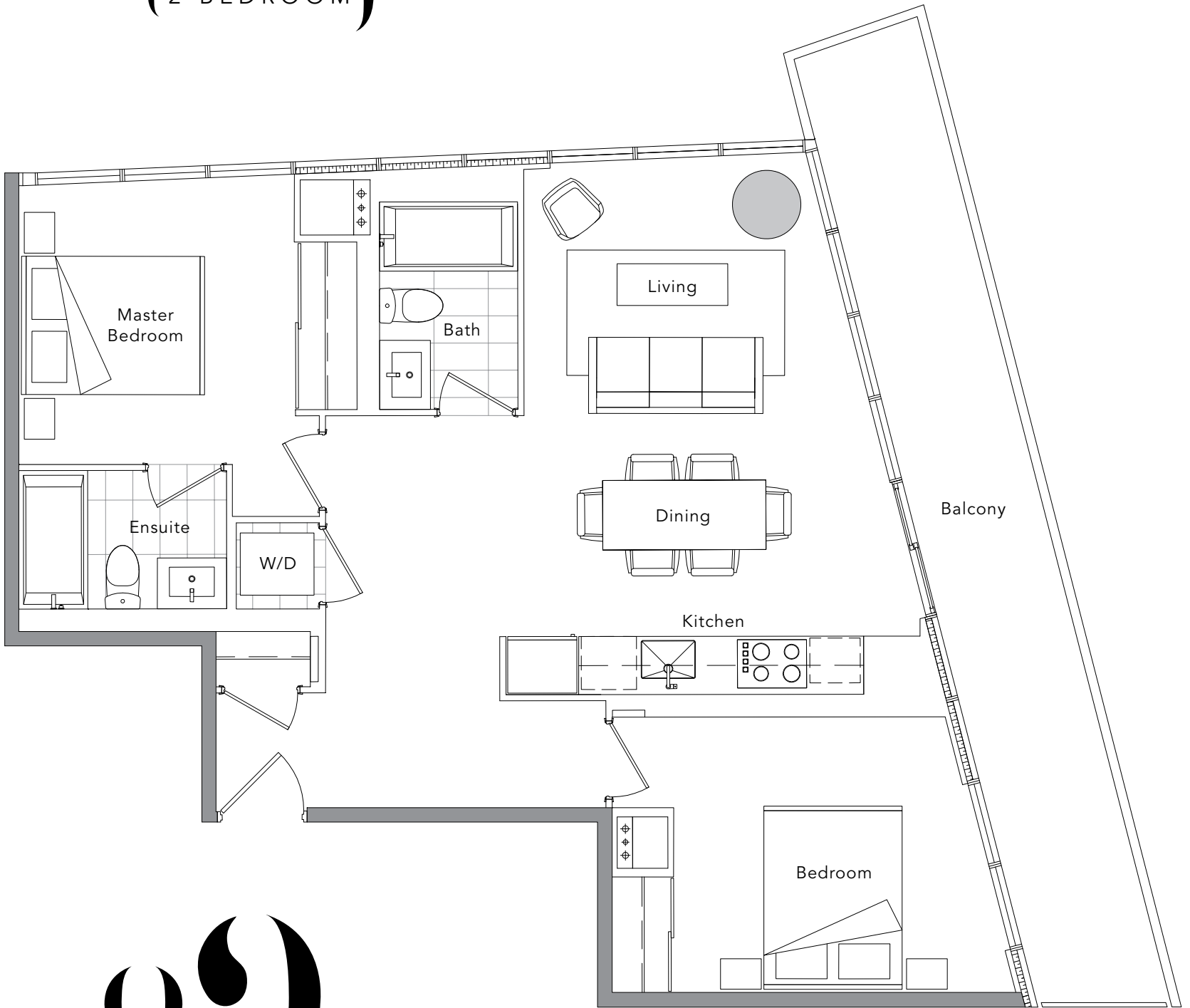
• Suite Area: 828 s.f., Balcony Area: 145 s.f.,
Total Area: 973 s.f.



The developer reserves the right to make minor revisions to interior wall locations and exterior window system. All materials and drawings are approximate. Information is subject to change without notice. Actual square footage may vary from the stated floor plan. Furniture and upgrades shown on plans are for illustration purposes only and are not included. E. & O. E.

• Suite Area: 848 s.f., Balcony Area: 185 s.f.,
Total Area: 1033 s.f.

(2 BEDROOM)

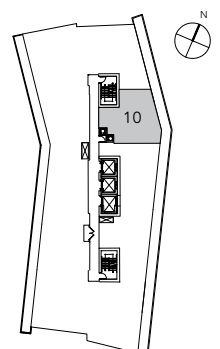
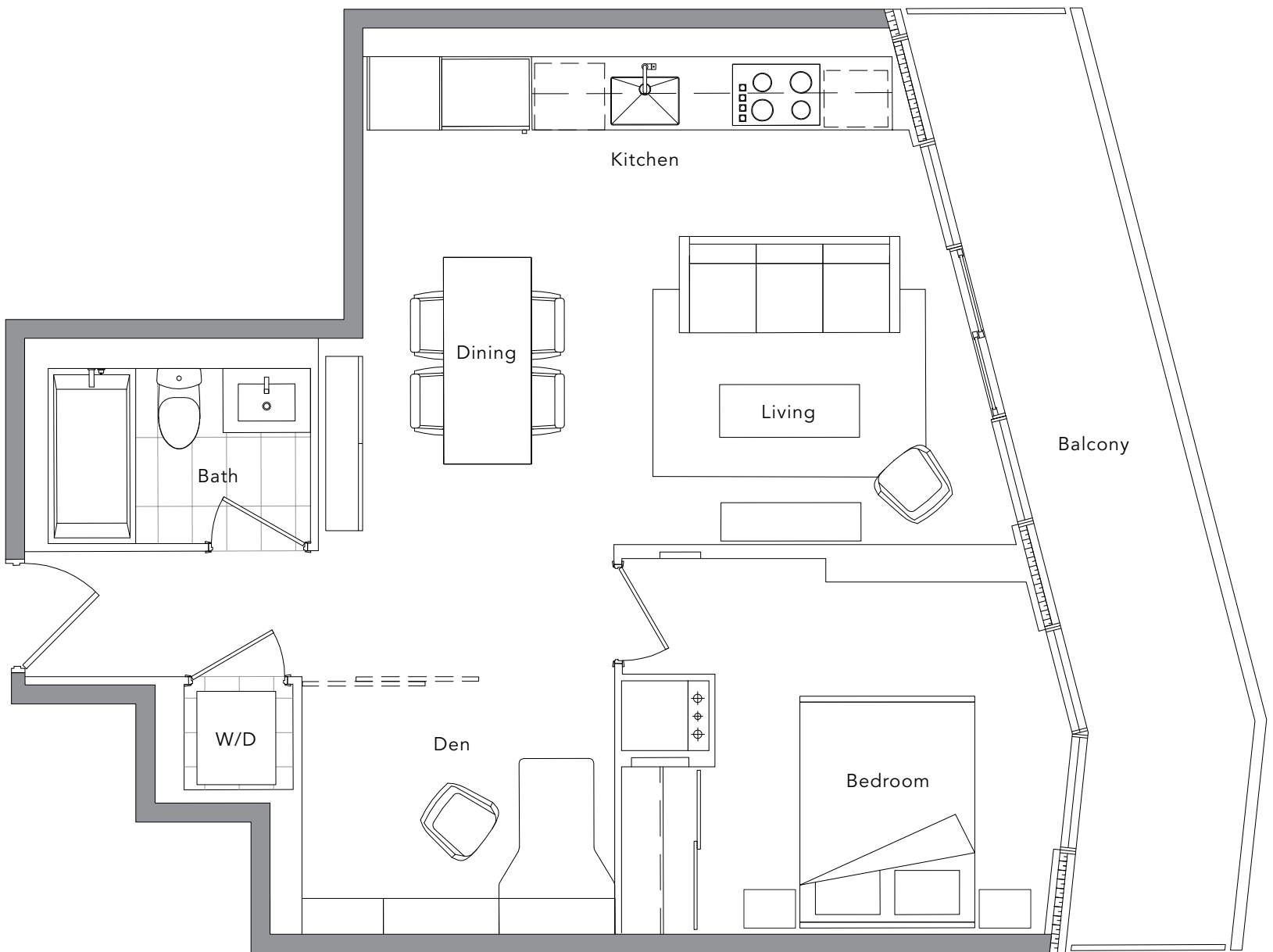


The developer reserves the right to make minor revisions to interior wall locations and exterior window system. All materials and drawings are approximate. Information is subject to change without notice. Actual square footage may vary from the stated floor plan. Furniture and upgrades shown on plans are for illustration purposes only and are not included. E. & O. E.

(1 BEDROOM + DEN)

10.

• Suite Area: 668 s.f., Balcony Area: 138 s.f.,
Total Area: 806 s.f.

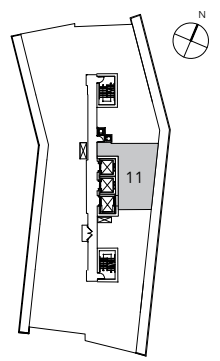


The developer reserves the right to make minor revisions to interior wall locations and exterior window system. All materials and drawings are approximate. Information is subject to change without notice. Actual square footage may vary from the stated floor plan. Furniture and upgrades shown on plans are for illustration purposes only and are not included. E. & O. E.



(1 BEDROOM + DEN)

• Suite Area: 698 s.f., Balcony Area: 163 s.f.,
Total Area: 861 s.f.



The developer reserves the right to make minor revisions to interior wall locations and exterior window system. All materials and drawings are approximate. Information is subject to change without notice. Actual square footage may vary from the stated floor plan. Furniture and upgrades shown on plans are for illustration purposes only and are not included. E. & O. E.



(features & finishes)



Suite Features:

- 9' ceiling throughout*
- Choice of 3 interior colour schemes
- Extra large open balconies in all suites
- Laminate flooring throughout the main living area, bedroom(s) and den
- Roller-shade window coverings

Kitchen Features:

- Carrara marble backsplash
- Composite quartz countertop
- Thermofoil cabinetry with open display shelving
- Under-cabinet lighting
- Blum soft-close hardware
- Waste recycling bin & sliding basket under kitchen sink
- Under-mount stainless steel sink
- Grohe polished chrome faucet with pull-down spray
- Premium appliance package including:
 - 30" Liebherr integrated refrigerator
 - 30" AEG stainless steel electric cooktop
 - 30" AEG stainless steel integrated oven
 - 30" AEG stainless steel hood fan
 - 24" AEG integrated dishwasher
- Panasonic stainless steel microwave oven with trim

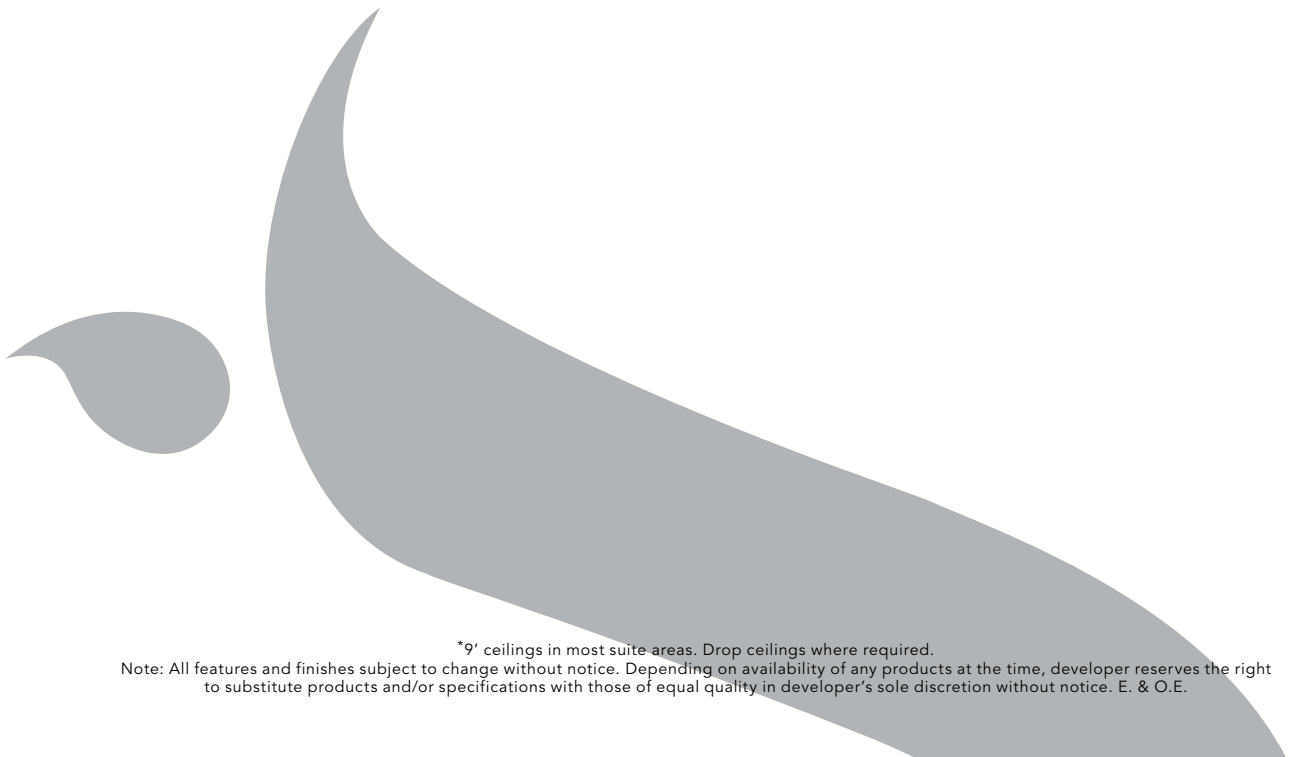


Bathroom Features:

- Polished Carrara marble wall tile
- Honed Carrara marble floor tile
- Thermofoil cabinetry with internal drawers
- Blum soft-close hardware
- Composite quartz countertop
- Under-mount sink
- Custom medicine cabinet with mirror, shelves and built-in lighting
- Grohe polished chrome faucet, tub spout and shower head
- Toto dual-flush toilet

Laundry Feature:

- Frigidaire Affinity 3.8 cu.ft. front-load washer
- Frigidaire Affinity 7.0 cu.ft. front-load dryer



CONCORD
PARK PLACE

• presentation centre / 1001 sheppard ave east
concordadex.com 416.813.2999